



Tubular Specialties Manufacturing, Inc.

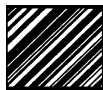
13011 South Spring Street, Los Angeles, CA 90061-1685
 Phone 800/CALL TSM (800/225-5876) or 310/515-4801
 online www.grabbar.com • Fax 310/217-0653

840-T

Technical Data

Revised Feb. 2001

Tactile Restroom Signs



Model Numbers

- 840TWomen
- 840-ATMen
- 840-BTRestrooms
- 840-CTAccessible



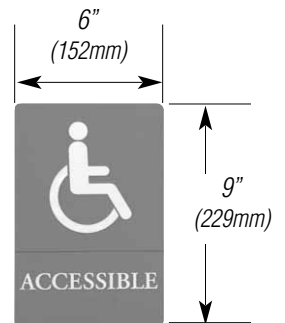
840-T
Women



840-AT
Men



840-BT
Restroom



840-CT
Accessible



Suggested Architectural Specification

Model [840-T Women] [840-AT Men] [840-BT Restrooms] [840-CT Accessible] Signs from TSM. Tubular Specialties Manufacturing, Inc., Los Angeles, California, 800/Call TSM (800/225-5876). [Gray and white plastic] (for 840-T, 840-AT, 840-BT) or [Blue and white plastic] (for 840-CT) with polished edges. Pictorial symbol sign tactile and raised minimum $\frac{1}{32}$ " (0.8mm). Border dimensions of

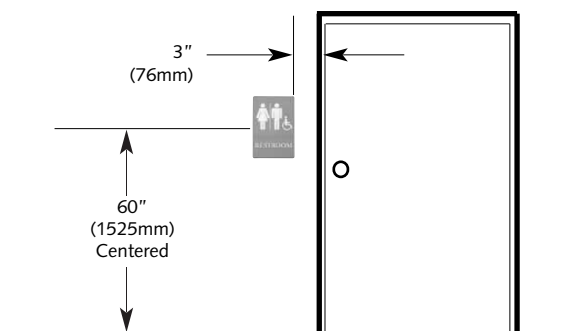
pictogram are 6" minimum in height (152mm). Text character height of $\frac{21}{32}$ " (16.7mm) or $\frac{5}{8}$ " minimum (16mm). Wording [WOMEN] [MEN] [RESTROOMS] [ACCESSIBLE]. Uppercase, simple serif type positioned directly below the pictogram. Grade 2 Braille positioned directly below text. Matte, textured background with contrasting white graphics.



Installation/Care & Maintenance

Sign is surface mounted. Double-backed tape is provided. To clean signs, wipe with ammonia-based cleaner and soft cloth; avoid abrasive cleansers. Intended for interior use only.

ADA guidelines state: "...Signs shall be installed on the wall adjacent to the latch side of the door. Where there is no wall space to the latch side of the door, including at double leaf doors, signs shall be placed on the nearest adjacent wall. Mounting height shall be 60" above the finish floor to the centerline of the sign (1525mm). Mounting locatin for such signage shall be so that a person may approach within 3" (76mm) of signage without encountering protruding objects or standing within the swing of a door."



Manufacturer reserves the right to alter design or dimensions without formal notice and without incurring obligation.



Guarantee

TSM 840T Tactile Restroom Signs are guaranteed against defects in workmanship and material for one year from shipping date.