



Tubular Specialties Manufacturing, Inc.

13011 South Spring Street, Los Angeles, CA 90061-1685
 Phone 800/Grab Bar (800/472-2227) or 310/515-4801
 www.GrabBar.com • Fax 310/217-0653

733-PHI2

Technical Data

Revised January 2008

Page 1 of 2

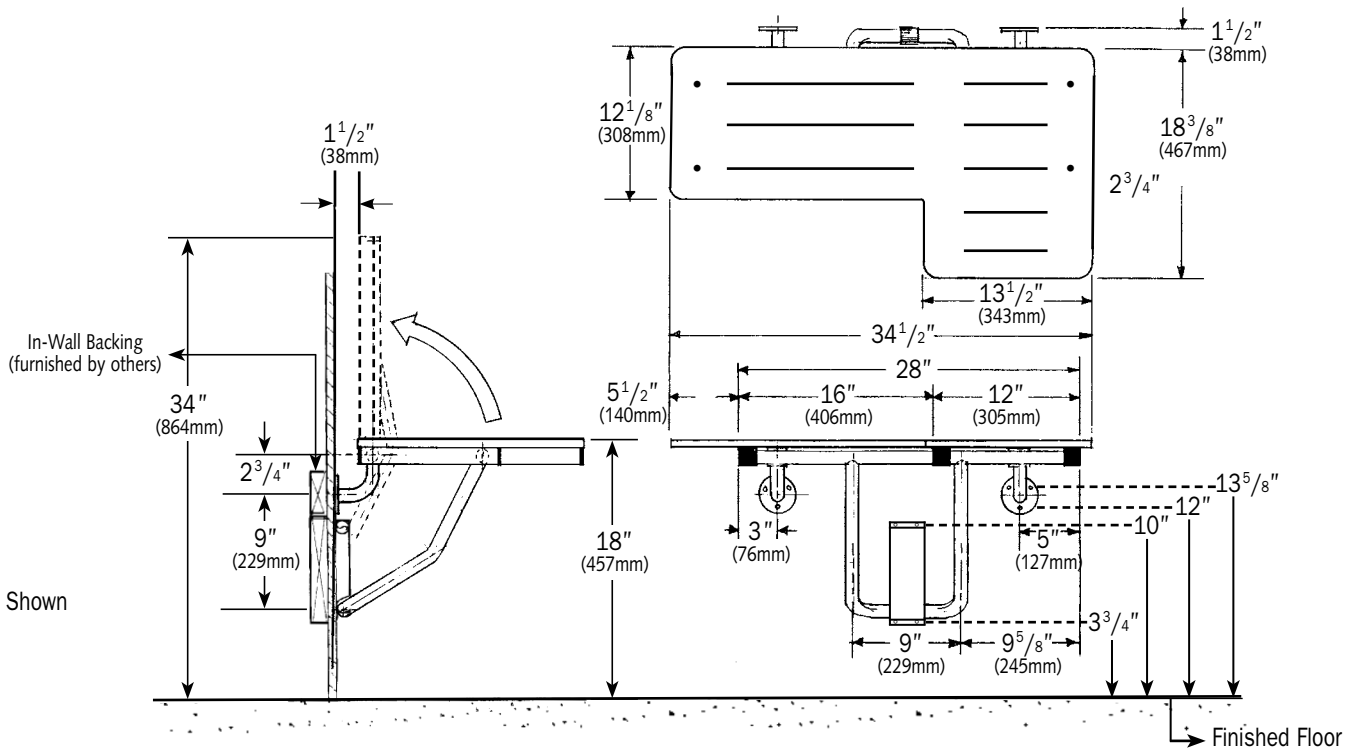
Folding Wheelchair Transfer Seat
 Ivory Phenolic One-Piece Top



Model 733-PHI2, LH



Model 733-PHI2, RH



Left Hand Shown

Guarantee

TSM 733-PHI2 Folding Wheelchair Transfer Seat is guaranteed against defects in workmanship and material for one year from shipping date.



Specification

TSM Model 733-PHI2 Folding Wheelchair Transfer Seat frame shall be stainless steel satin finish type 304 (18-8) 1¹/₄" x 18 gauge square tubing (32 x 1.2mm) and 1" x 18 gauge round tubing (25 x 1.2mm). Flanges shall be stainless steel satin finish type 304 (18-8) 8 gauge round 3" (4.2 x 76mm) diameter with three 1/4" (6mm) mounting holes. Guide bracket for legs shall be all stainless steel type 304 (18-8); spring 24 gauge (0.6mm) shall be spot welded to heavy gauge base plate; guide bracket shall be 16 gauge (1.6mm) formed construction with four 1/4" (6mm) mounting holes. Phenolic top shall be solidly-

fused plastic laminate 1/2" thick (13mm) with matte-finish melamine surface, ivory colored face sheet and integrally bonded black phenolic resin core. Top shall be bolted to frame with countersunk stainless steel machine screws and cap nuts. Handing shall be [right] [left].

Folding Wheelchair Transfer Seat shall be Model 733-PHI2 as manufactured by Tubular Specialties Manufacturing, 13011 South Spring Street, Los Angeles, California 90061, tel 800-Grab Bar.



Operation

The Folding Wheelchair Transfer Seat complies with the Americans with Disabilities Act (ADA) for use in a 36" x 36" shower stall. The seat's distinctive shape allows the user to transfer from a wheelchair to the narrow part of the seat and slide across to the wide section which is installed at the corner of the stall. Grab bars should be specified in conjunction with all shower seats.

The guide bracket supports U-shaped legs which move freely up and down, allowing user to lower the seat to sitting position or fold against the wall, and is held in place by clip with spring action. The spring at the top of the base plate holds the seat in an upright position. When seat is pulled down, legs are released from the spring and the seat folds down into sitting position.

Note: TSM also offers a similar seat with a counterbalance mechanism that offers resistance when the seat is lowered. If this feature is desired, specify 731 instead of 733.



Installation

1. The 733-PHI2 is manufactured to meet and exceed ADAAG requirements as published in ANSI A117.1-1986 and CFR 28 part 36, Federal Register Vol. 56 #144, July 26, 1991, section 4.21.3 and section 4.26.3 that the fabricated product shall be of adequate strength to support a load of 250 pounds (113.4kg). Having said this, the seat is only as strong as the mounting surface to which it is attached. Consult local codes to assure compliance.
2. In-wall backing is required. If the shower is prefabricated, secure and appropriate backing must be provided by the shower stall manufacturer.
3. Seat is surface mounted to wall through in-wall backing with two mounting flanges at top and guide bracket below. While local codes must be complied with in mounting seat, the recommended seat height is 18" (457mm) above floor level. The template that is supplied with each seat will allow you to mount the seat at that height with mounting holes from finished floor at 3³/₄" & 10" for guide bracket and 12" & 13⁵/₈" for flanges.
4. It is the installer's responsibility to select fasteners that are appropriate for the wall condition and application; TSM does not include fasteners with shower or tub seats.
5. All accessories must be checked frequently to ensure that the installation is secure and the product is in good working condition.



Guarantee

TSM 733-PHI2 Folding Wheelchair Transfer Seat is guaranteed against defects in workmanship and material for one year from shipping date.