

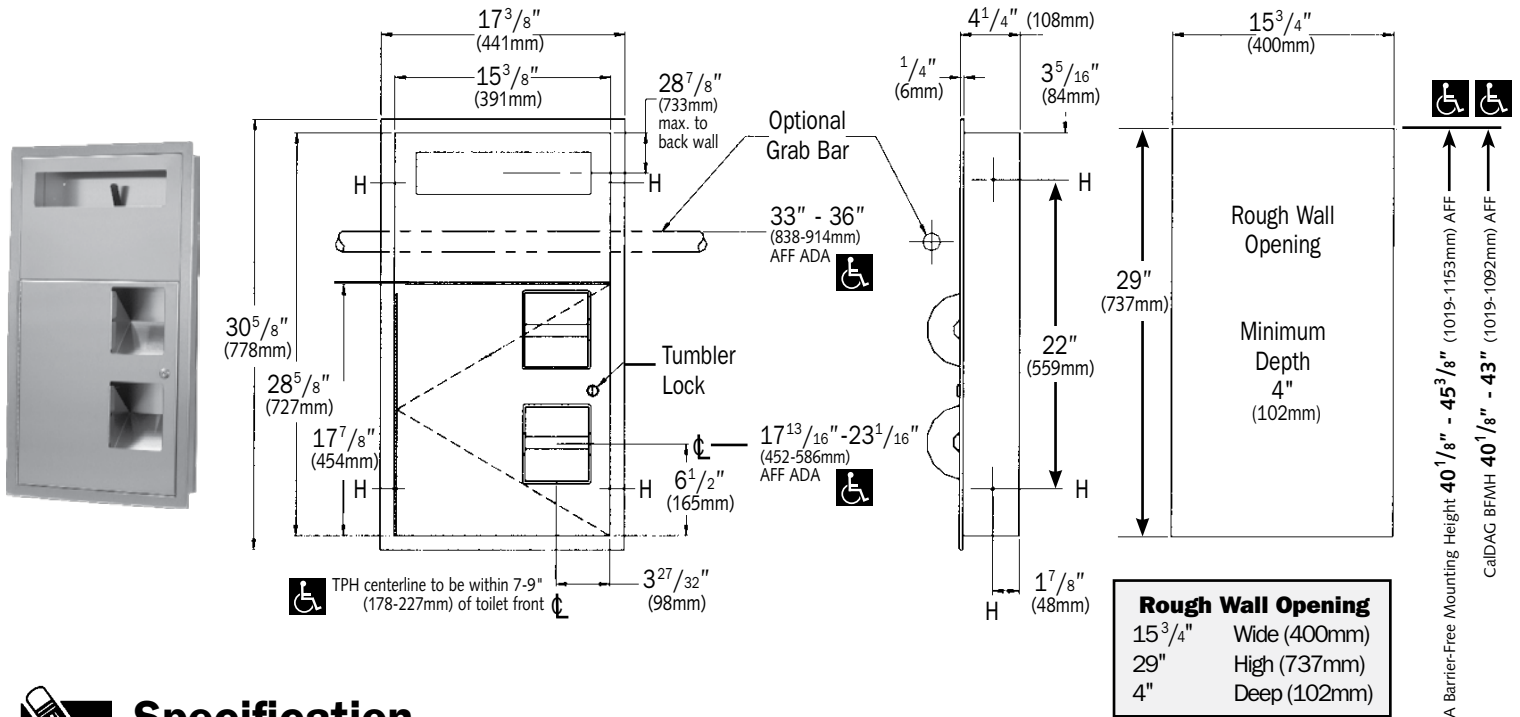


Tubular Specialties Manufacturing, Inc.
 13011 South Spring Street, Los Angeles, CA 90061-1685
 Phone 800/Grab Bar (800/472-2227) or 310/515-4801
 www.GrabBar.com • Fax 310/217-0653

5360

Recessed Seat Cover and Toilet Paper Dispenser

Technical Data
 Revised September 2007



Specification

Recessed Seat Cover and Toilet Paper Dispenser shall hold and dispense 1000 paper seat covers and two rolls standard or 1800 sheets 4 1/2" x 5 1/4" (114mm x 133mm) toilet paper. Seat cover dispenser panel and toilet paper dispenser door shall be fabricated of alloy 18-8 stainless steel, type 304, 18 gauge; face frame and cabinet shall be 22 gauge. All exposed surfaces shall have No. 4 satin finish and be protected by a plastic PVC film easily removed after installation. Seat cover cut-out shall have a fully-deburred edge for snag-free dispensing and user safety. Toilet paper dispenser door shall be attached to cabinet at side with a full-length 3/16" (5mm) dia. stainless steel multi-

strapped piano hinge and shall be held closed with a tumbler lock keyed alike to other TSM Washroom Equipment. Face trim shall be 1" (25mm) wide formed from one piece with no mitres, welding or open seams and have 1/4" (6mm) square return to face of wall. Structural assembly of all components shall be of welded construction. Cabinet shall include two theft- and vandal-resistant rollers that shall be of molded high-impact resistant plastic with integral molded-in stainless steel endpins.

Recessed Seat Cover Toilet Paper Dispenser shall be Model 5360 as manufactured by Tubular Specialties Manufacturing, 13011 South Spring Street, Los Angeles, California 90061, tel 800-Grab Bar.

Operation

Seat covers are self-feeding until supply is depleted. Toilet paper rolls feed freely until depleted; level of supply is constantly visible for low level warning. Toilet paper rolls and paper seat

covers are serviced by unlocking and opening door. Locked door prevents inadvertent dumping and unauthorized removal. Toilet paper spindles are carried in vandal-resistant sub-frame, accessible when door is opened.

Installation

- Unit is mounted in wall recess through concealed mounting holes provided. Note that top of rough wall opening is 13/16" (21mm) below top of face trim. It is the installer's responsibility to select fasteners that are appropriate for the wall or partition condition and application. For plaster or dry wall, provide in-wall backing complying with local building codes.
- For ADAAG compliance, the centerline of the TP Dispenser should be located within 7" - 9" (178-227mm) of the front of the toilet and the TP Dispenser

- opening bottom should be above 15" (381mm) minimum AFF, and the Seat Cover Dispenser opening centerline should be no higher than 48" (1219mm) maximum AFF.
- An optional grab bar (not provided) at 33"-36" (838-914mm) AFF to the top of the bar should allow the service door top to clear the bottom of the bar when opening the door.



TSM 5360 Recessed Seat Cover & Toilet Paper Dispenser is guaranteed against defects in workmanship and material for one year from shipping date.