

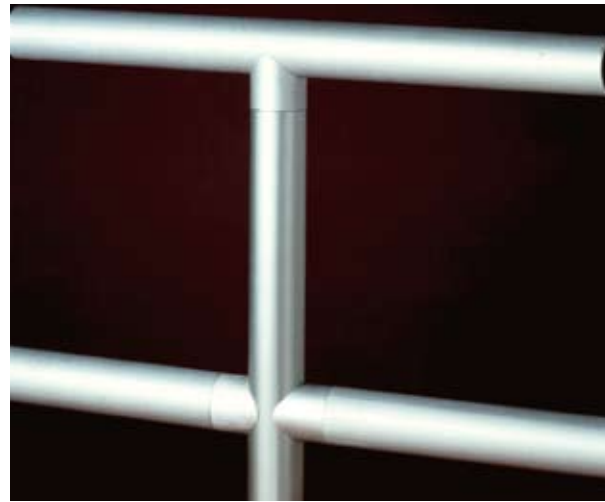
Aluminum offers a lightweight alternative to stainless steel, and TSM's AdaptaRail component system is an intelligent and adaptable connection/assembly solution for aluminum railing. The system is quick, convenient and avoids welding and grinding. In addition, AdaptaRail's internal connection system is designed to allow posts and top rails to run in continuous lengths. This provides a stronger railing system than one with cast tees and cross connections and complies with established safety standards for continuous, smooth surface rails.

ALUMINUM ALLOY 6063, CLEAR ANODIZED FINISH

- 1 1/4" Schedule 40 Pipe
[Tubing equivalent = 1.66" O.D. x .140" (42x3.6mm)]
- 1 1/2" Schedule 40 Pipe
[Tubing equivalent = 1.9" O.D. x .145" (48x3.7mm)]

CONNECTIONS

- Concealed mechanical fasteners at intersections
- Epoxy at splice joints

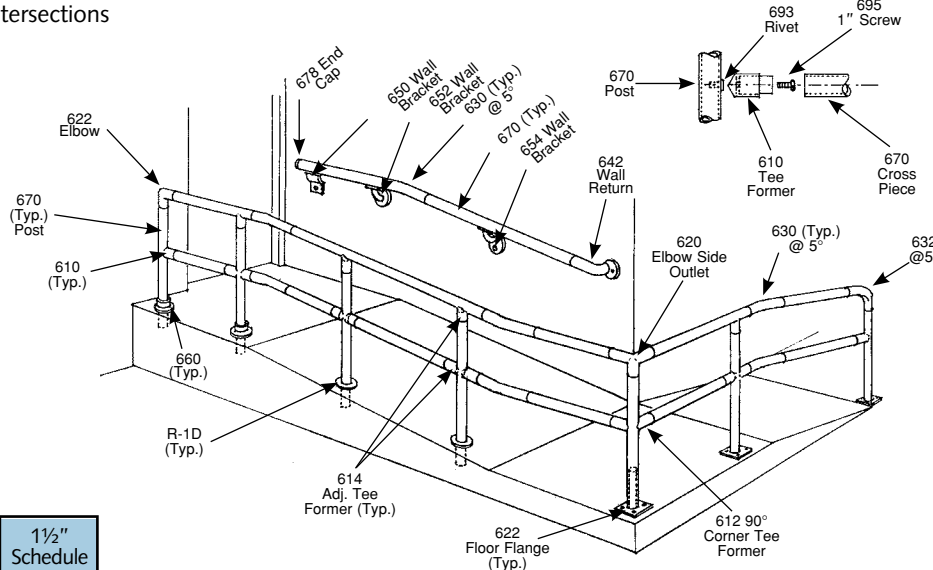


The flexibility of AdaptaRail's component assembly allows installers to cut pipe to size at the jobsite, eliminating the need for submitting precise measurements to the factory.

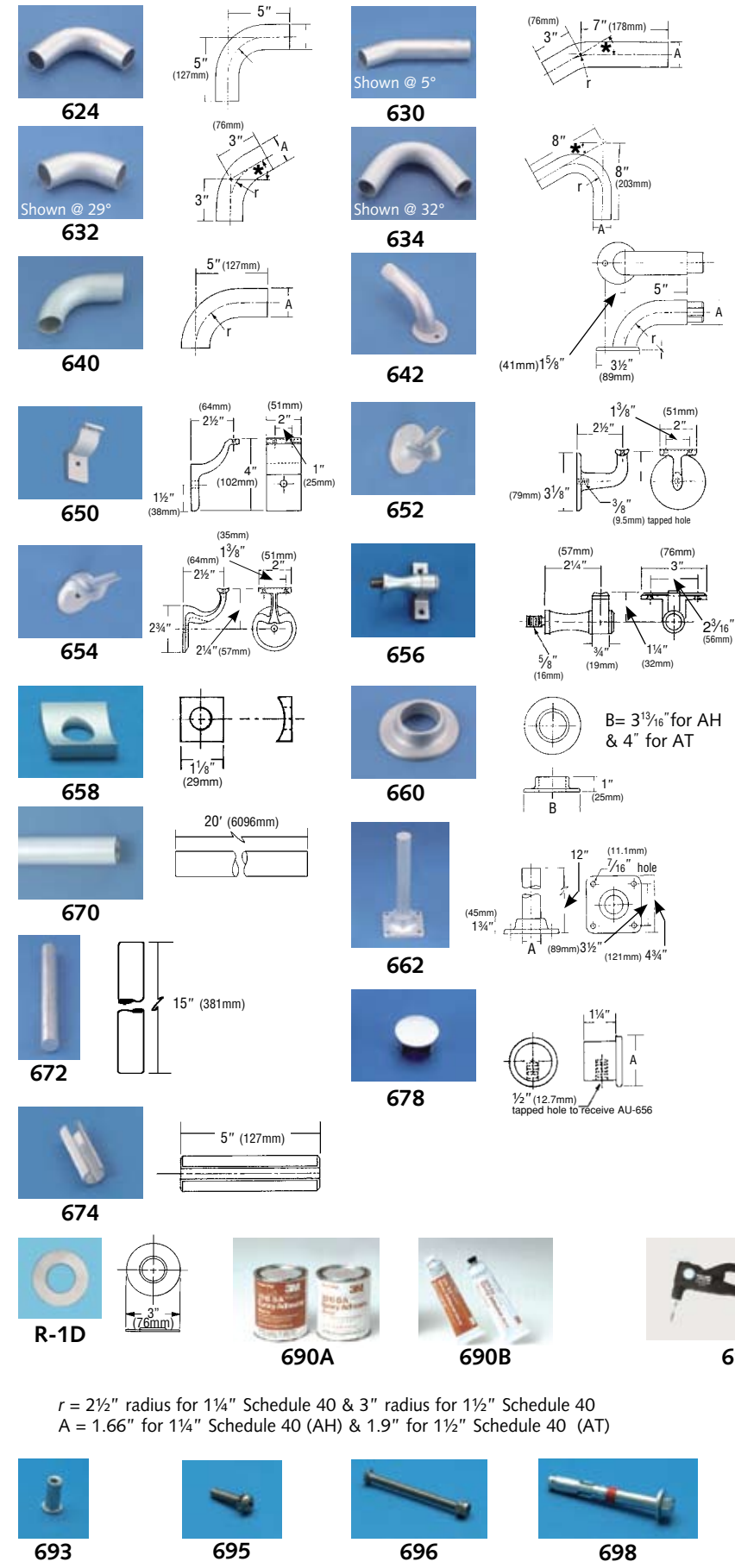
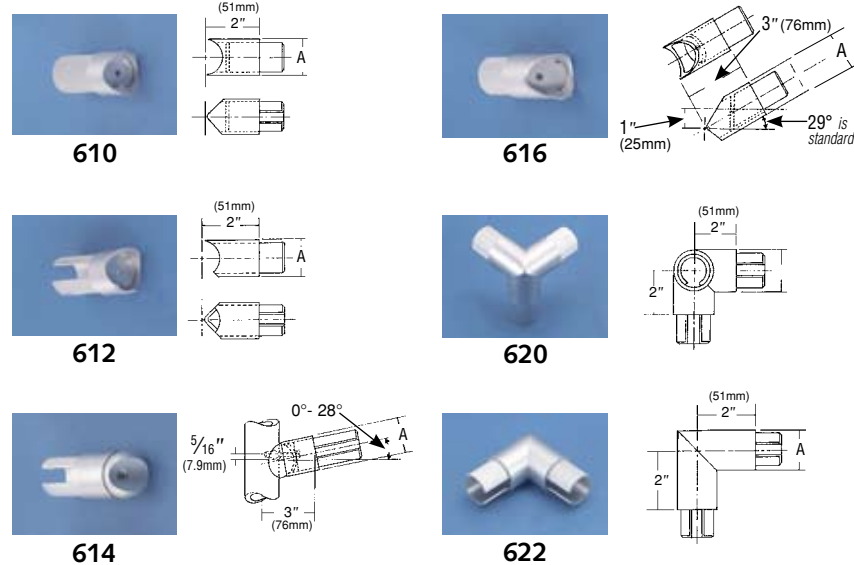


Tee Connection
Use threaded rivet and stainless steel machine screw with lock washer for forming tees.

Cross Assembly
Where two 90° tees are mounted opposite each other to form a cross assembly, a stainless steel through bolt with lock nut may be used.



| Description | 1 1/4" Schedule 40 Pipe | 1 1/2" Schedule 40 Pipe |
|---|-------------------------|-------------------------|
| 610 90° Tee Former Requires AU-693 & AU-695 for tee connection or AU-696 for cross assembly. | AH-610 | AT-610 |
| 612 90° Corner Tee Former Requires AU-693 & AU-695 for tee connection or AU-696 for cross assembly. | AH-612 | AT-612 |
| 614 Adjustable Tee Former Requires AU-693 & AU-695 for tee connection or AU-696 for cross assembly. | AH-614 | AT-614 |
| 616 Angle Tee Former Requires AU-693 & AU-695 for tee connection or AU-696 for cross assembly. | AH-616 | AT-616 |
| 620 Elbow Side Outlet Requires epoxy for use with built-in dowel splice connections. | AH-620 | AT-620 |
| 622 Elbow Mitered Requires epoxy for use with built-in dowel splice connections. | AH-622 | AT-622 |



| Description | 1 1/4" O.D. (38mm) | 1.9 O.D. (48mm) |
|---|--------------------|-----------------|
| 624 Elbow Rounded Requires dowels and epoxy for each splice connection. | AH-624 | AT-624 |
| 630 Transition Elbow Specify angle desired between 5° and 180°. Requires dowels and epoxy for each splice connection. | AH-630 | AT-630 |
| 632 Lower Post Elbow Same as 630. | AH-632 | AT-632 |
| 634 Upper Post Elbow Same as 630. | AH-634 | AT-634 |
| 640 90° Radius Wall Same as 624. | | |
| 642 Wall Return with Flange Terminates rail into side wall. | AH-642 | AT-642 |
| 658 Adapter for Post Bracket Allows post bracket to fit snugly onto pipe. | AH-658 | AT-658 |
| 660 Cover Flange See page 6 for installation details. | AH-660 | AT-660 |
| 662 Heavy Duty Floor Flange For surface mounting. Includes 12" (305mm) Reinforcing Post Insert. | AH-662 | AT-662 |
| 670 Schedule 40 Pipe | AH-670 | AT-670 |
| 672 Reinforcing Post Insert Recommended for all embedded post floor mounted installations. | AH-672 | AT-672 |
| 674 Internal Dowel Required for splice connections (note: many components have dowel built-in.) Serrated for pressure fit into component pipe sections. Specify with epoxy. | AH-674 | AT-674 |
| 678 End Cap Press fits into end of pipe. Can be used in conjunction with 656 & 658. | AH-678 | AT-678 |
| R-1D Decorative Flange | AH-R-1D | AT-R-1D |

| Description | Universal Application |
|---|-----------------------|
| 650 Wall Bracket (Extruded) Mounting hardware not included.* | AU-650 |
| 652 Wall Bracket (Cast) Mounting hardware not included.* | AU-652 |
| 654 Wall Bracket (Cast) Mounting hardware not included.* | AU-654 |
| 656 Post Bracket Includes 10/32 stainless steel set screws. Mounts to post. Can be used in conjunction with 678. | AU-656 |
| 690 Epoxy Structural Adhesive For use with dowels. AU-690A=1 qt. (.95 litre) & AU-690B=4 oz. (.12 litre) | AU-690A AU-690B |
| 692 Manual Rivet Header | AU-692 |
| 693 Threaded Rivet Use with 695 Stainless Steel Machine Screw for forming tee. | AU-693 |
| 695 Stainless Steel Machine Screw with Lock Washer, 1/4"-20 x 1" Use with 693 Threaded Rivet for forming tee. | AU-695 |
| 696 Stainless Steel Through Bolt with Lock Nut, 1/4"-20 x 3" Use to form a cross assembly (two 90° tees mounted opposite each other.) | AU-696 |
| 698 Steel Sleeve Anchor Bolt 3/8" x 3" Recommended for use with 662 Floor Flange. | AU-698 |

*It is the installer's responsibility to select appropriate fasteners for a particular application.