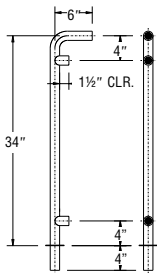


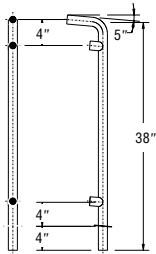
Component sections combine to create panels 60" (1524mm) inside to inside of posts. Custom sizes are available. Standard height is 34".



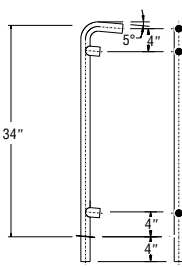
550



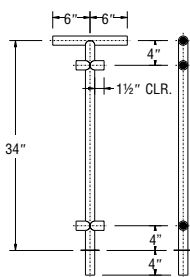
552



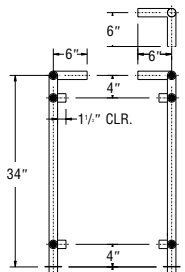
553



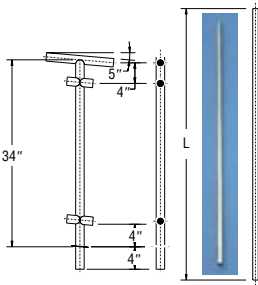
554



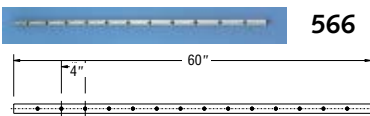
556



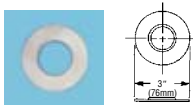
558



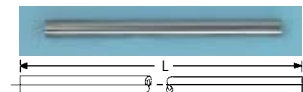
568



566



R-ID



106

PICKET RAIL COMPONENTS (Series 550)

Description	1 1/2" O.D. (38mm)	1.9" O.D. (48mm)
550 Termination Post For use with level rail at each termination end of rail.	H-550	T-550
552 Sloping End Post, Bottom Slope is 1:12. Custom angles available.	H-552	T-552
553 Sloping End Post, Top Slope is 1:12. Custom angles available.	H-553	T-553
554 Intermediate Post For use with level rail.	H-554	T-554
556 90° Corner Post For use with level rails. Tubing is miter cut at 45° and heliarc welded to form a 90° corner.	H-556	T-556
558 Intermediate Post For use with graded surfaces. Slope is 1:12. Custom angles available.	H-556	T-556
566 Perforated Tube 1" O.D. x 18 ga. (25x1.2mm) Specify for level plane or angle. If angle, 5° is standard; custom slopes available.	566	566
568 Picket 1/2" O.D. x 18 ga. (12.7x1.2mm)	568	568
106 Straight Tubing 16 gauge (1.7mm). Standard length is 20' (6096mm). Smaller sizes can be custom cut.	H-106	T-106
R-1D Decorative Flange Optional, for finishing purposes only. See page 6 for more installation information.	H-R-1D	T-R-1D